

# Cypress Creek

Home Plan



*Elevation D*



*Elevation E*



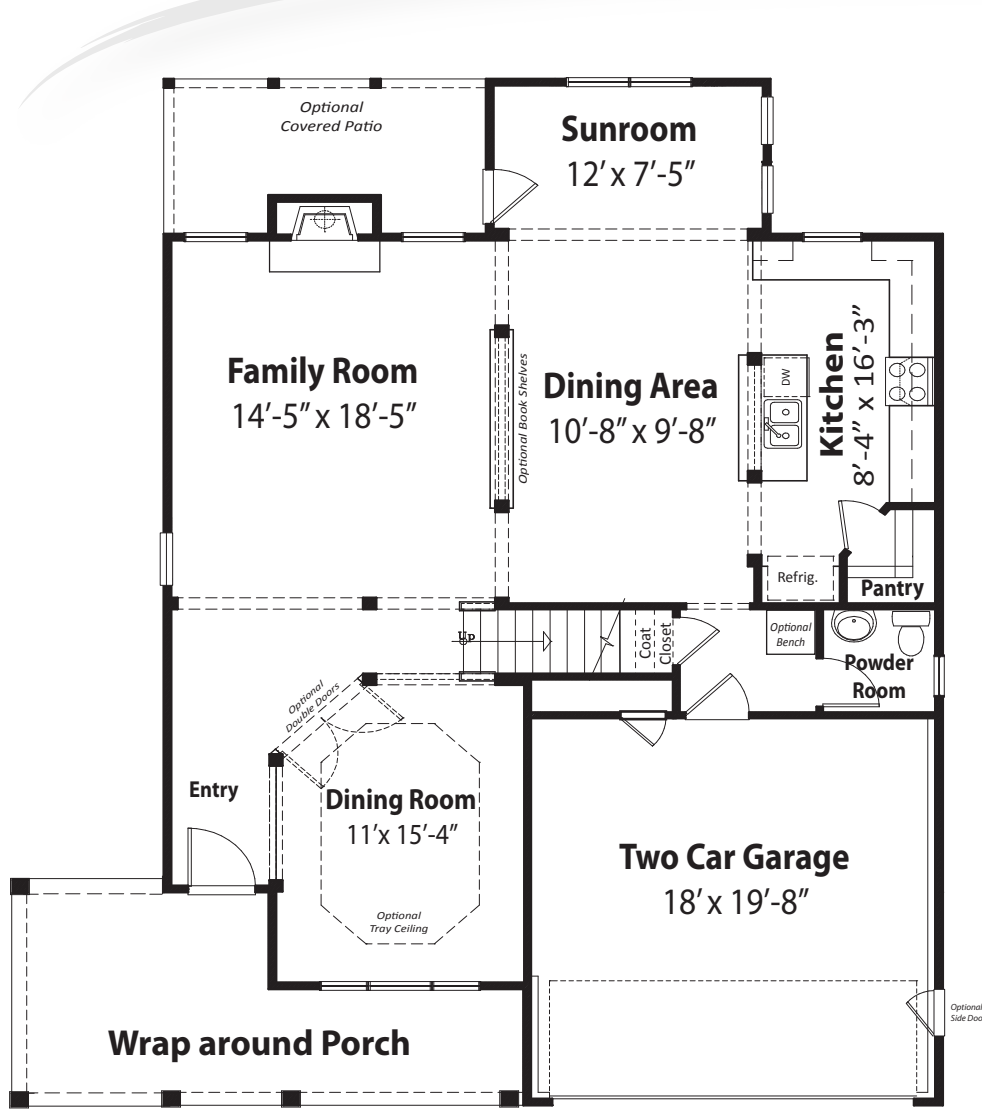
*Elevation F*

*Purchase your Home from a Builder who has thought about what it really takes to live day after day in your Home. We know the value we offer, now let us show you!*

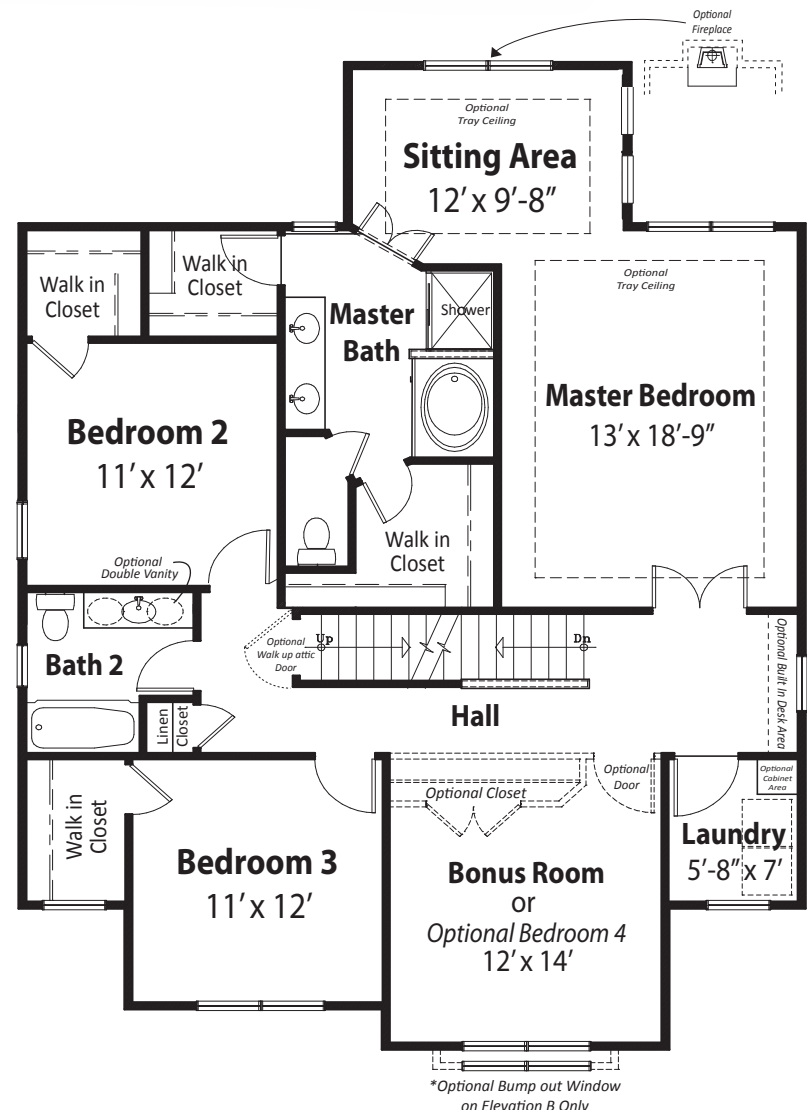
**Terramor**  
**HOMES**  
Homes with *a Touch\**

# Cypress Creek

2,585 sq. ft | 4 Bedrooms | 2.5 Baths | 2 Car Garage



1<sup>st</sup> Floor



2<sup>nd</sup> Floor

\*Optional Bump out Window on Elevation B Only

**Cheswick Community**  
 1021 Finley Point Place, Knightdale, NC 27545  
 Sun & Mon: 1-5pm • Tue-Sat: 10am-5pm

**Builder Representative:** Annita Bowden  
 P: 919.217.1000 • F: 919-217-1081  
 Annita.Bowden@TerramorHomes.com

**TerramorHomes.com**