

Zinnia

Homeplan



Elevation A



Elevation B



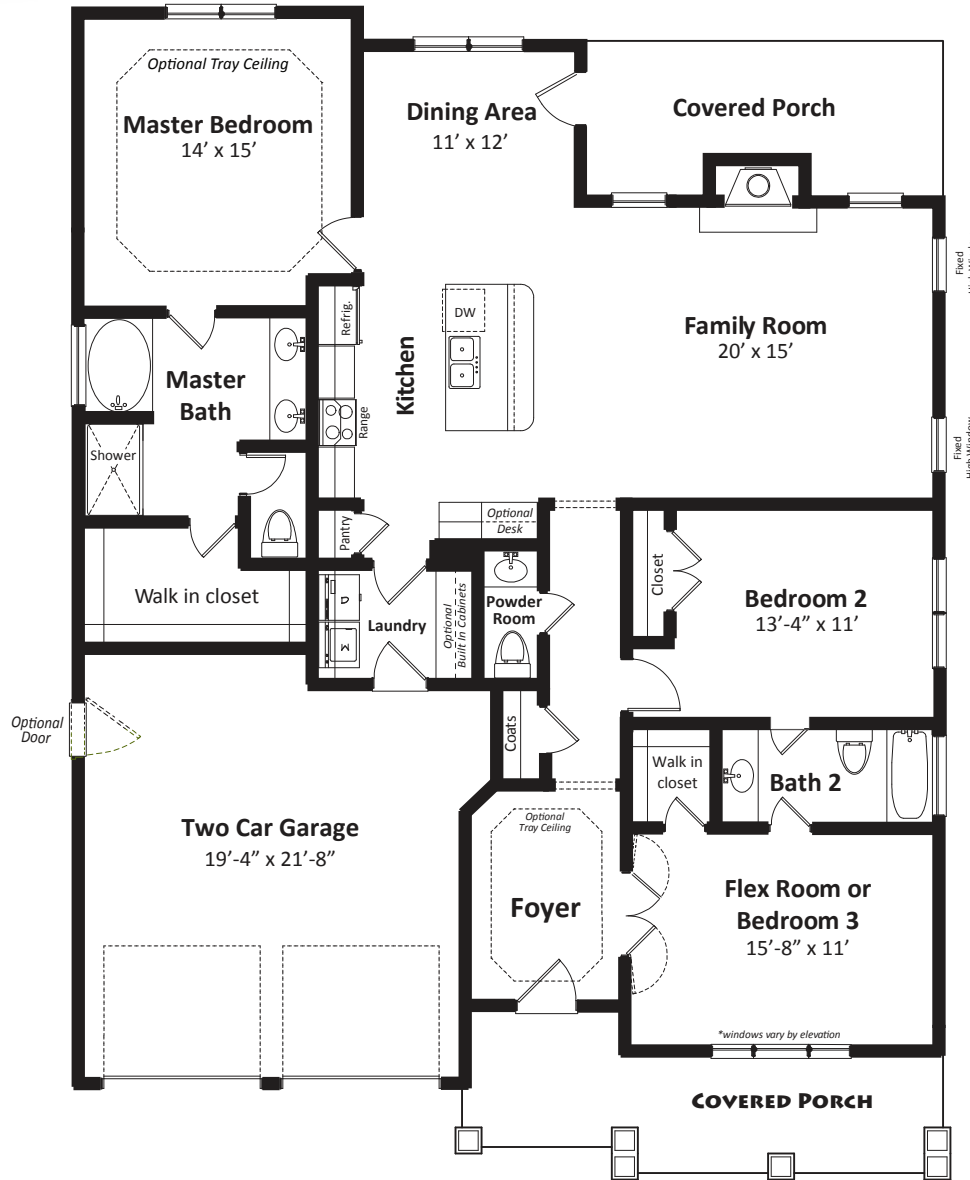
Elevation C

Purchase your Home from a Builder who has thought about what it really takes to live day after day in your Home. We know the value we offer, now let us show you!

Terramor
HOMES
Homes with a *Touch**

Zinnia

1,771 sq.ft. | 1.5 Stories | 3 Bedrooms | 2 Baths | Loft | 2-Car Garage



Cheswick Community

1021 Finley Point Place, Knightdale, NC 27545
Sun & Mon: 1-6pm • Tue-Sat: 10am-6pm

Builder Representative: Annita Bowden

P: 919.217.1000 • F: 919.217.1081

Annita.Bowden@TerramorHomes.com

TerramorHomes.com

